

# TRBOnet 5.1 New Features

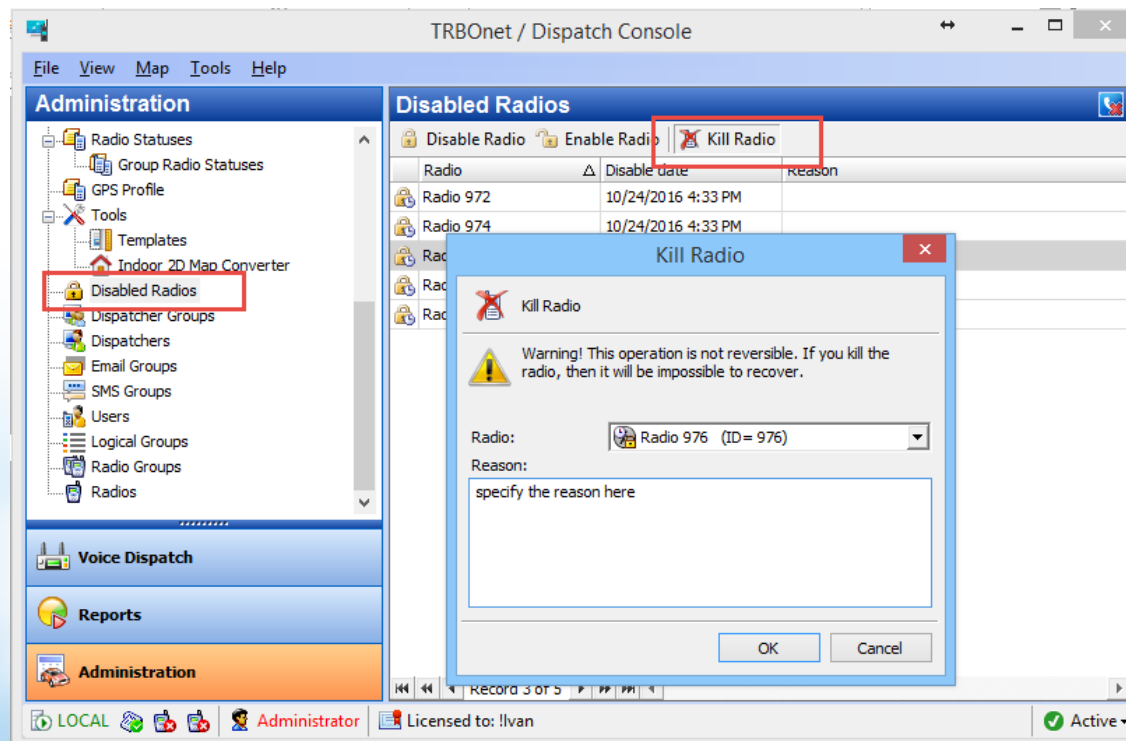
January 24, 2017



# Radio Kill for CapMax 2.7

Allows the dispatcher to kill a radio. The killed radio is not operable, and can be recovered by Motorola only.

- Users with the admin rights only
- Suspended Radio Kill



# Status Messages for CapMax 2.7

- Up to 250 status messages
- Very short commands (60ms)
- Sent over Control Channel
- How to use: Request to Talk,

Alarm Management, User Activity etc

Voice Dispatch Jon Morgan

General | Logical Groups | Additional | SIP Call

Callsign: Jon Morgan

Radio ID: 100 MDC / Sel-5 (Hex): 0

Radio Groups: All

Use icon: Portable Radios

GPS Source: Built-in GPS receiver

GPS Profile: Indoor

☒ GPS Enabled

**Telemetry Service**

TLM Source: Built-in Telemetry

TLM Profile: (Default)

**Text Messages Service**

TMS Source: Built-in Text Messages

**Radio Status Service**

RS Profile: Default

[Hide Advanced Settings](#)

OK Cancel

Default

Profile Name: Default

Receive Send

Status	Name
0	On Duty
1	Busy
2	Available
3	On Site
4	Need Help
5	Request To Talk

Description

Status: 0

Name: On Duty

Severity: Information

☒ Display as subscriber state

Add Remove

Apply

OK Cancel

Set Categories

Configuration: SU

Device Information: 871TQVE643

General

Job Tickets

Systems

Encoder

Decoder

Contacts

RX Group Lists

Capacity Max Features

Capacity Max Systems

Capacity Max Radio Wide Features: Capacity

Capacity Max Site Selection: v2.7\_Load5\_All

Capacity Max Emergency Systems

Capacity Max Status List\*

MyStatuses-SU(1)

Zone/Channel Assignment

General

Capacity Max Status List Items

ID	Status
0	On Duty
1	Busy
2	Available
3	On site

4 items found (0 currently selected).

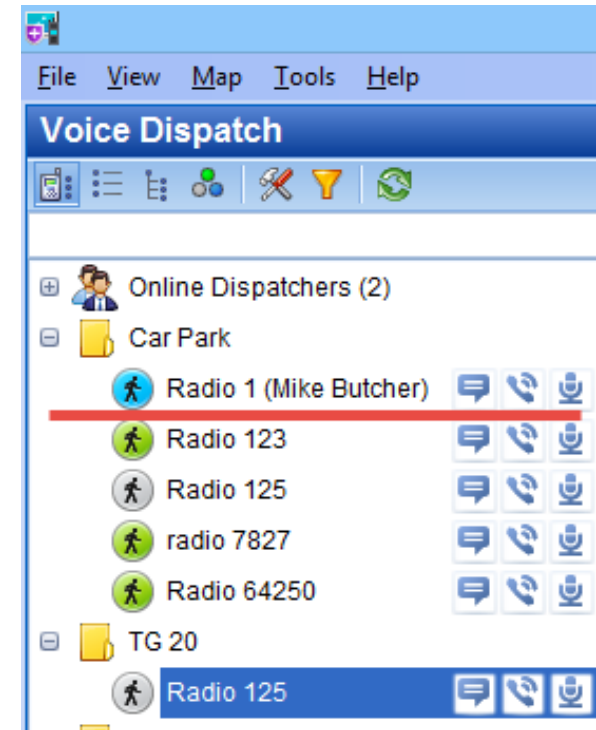
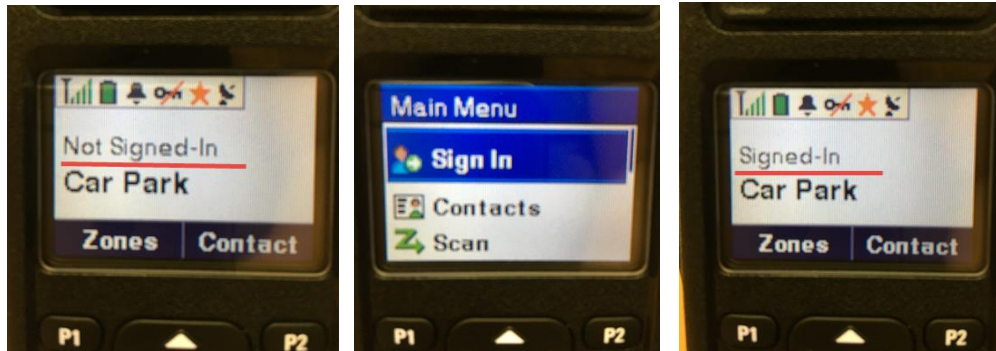
# Sign IN / Sign OUT

Designed for shift workers where a radio can be used by multiple people. Shows name of worker instead of Radio ID.

## New: Forced Sign-In

A radio user must sign-in within a specific time.

As soon as a radio switched on, TRBOnet sends voice/text reminders asking a user to sign-in. If a user does not sign-in, the TRBOnet sends Radio Disable command.

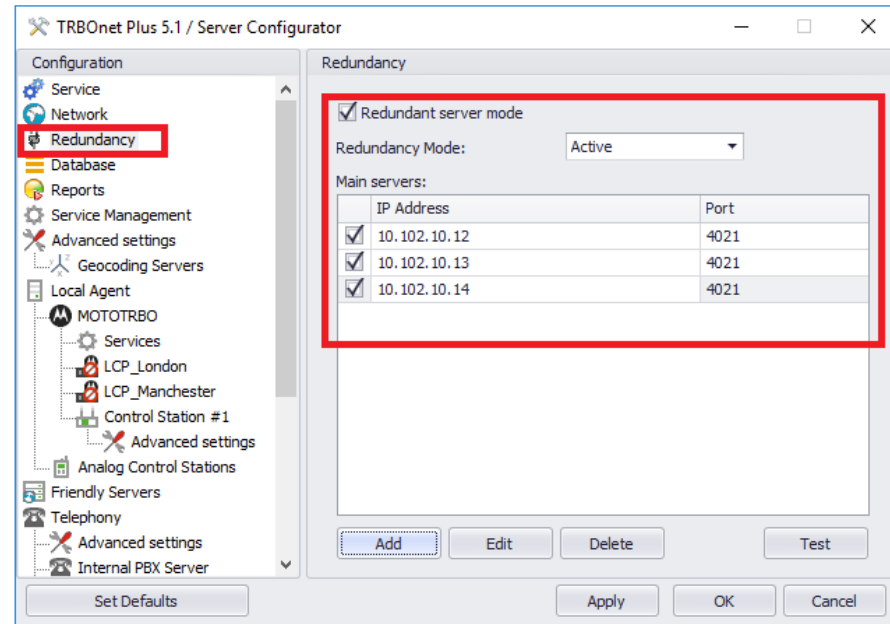


# Redundancy Update

- Full support for Capacity Max 2.7 redundancy
- All infrastructure components can be redundant
  - Server, Data Gateway, VRC, Trunking Controller, Swift Agent

## Supported Topologies:

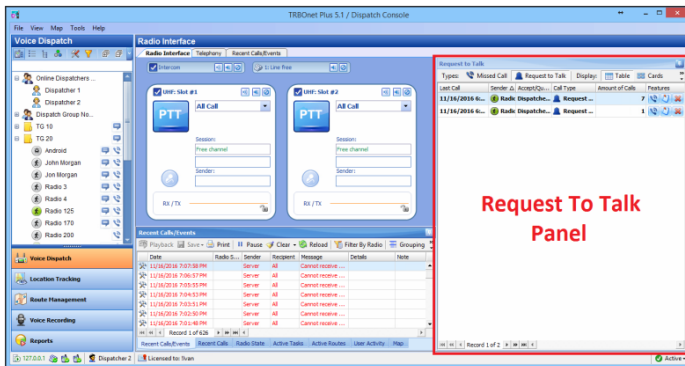
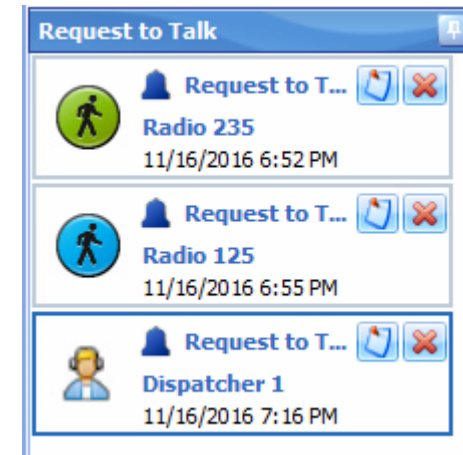
- Single Server on Failover Cluster
- N+1 Redundancy
- Multi Server installation



# Request To Talk (RTT)

A radio user sends RTT to Dispatcher or Group or Dispatchers using Call Alert, DTMF, Telemetry, TEXT or Status Messages. RTT appears on a dispatcher PC as PopUp message with audible alert, thus dispatcher will not miss RTT even if all talk groups are muted. Dispatcher can Accept, Reject or Queue RTT.

- RTT to Dispatcher or Dispatch Group
- Radio, Phone and Intercom Calls
- Group and Individual response Call
- Card and Table View for RTT



Request to Talk					
Types:	Missed Call	Request to Talk	Display:	Table  Cards	Clear  Filter
Last Call	Sender	Accept/Queue	Call Type	Amount of Calls	Features
11/16/2016 6:55 PM	Radio 125	Dispatcher 1	Request to Talk	7	
11/16/2016 6:52 PM	Radio 235	Dispatcher 2	Request to Talk	1	

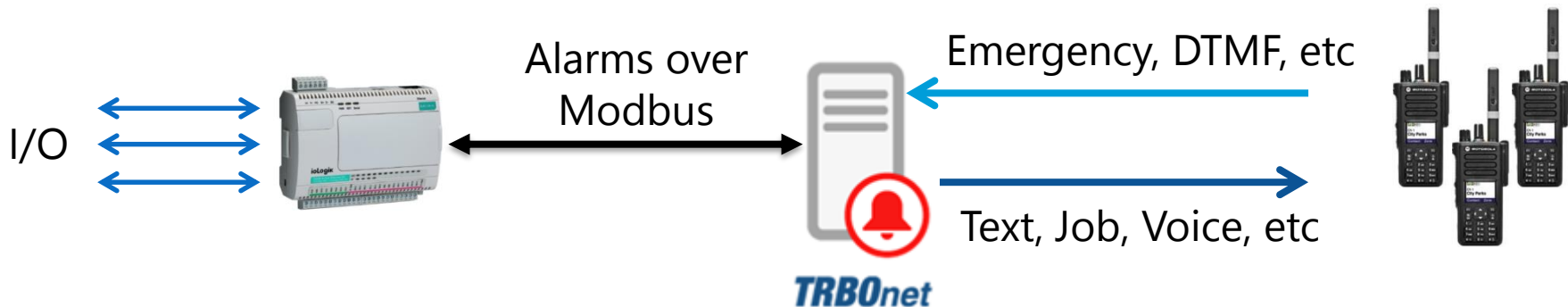
# Alarm Management Update

## Support for Modbus:

TRBOnet fully supports Modbus protocol. TRBOnet Server can work as Modbus Master or Slave.

READ: Alarm from Modbus device (RTU) can initiate an action (e.g., voice/text message to radios)

WRITE: in case of radio alarm TRBOnet sends command to Modbus device (RTU)

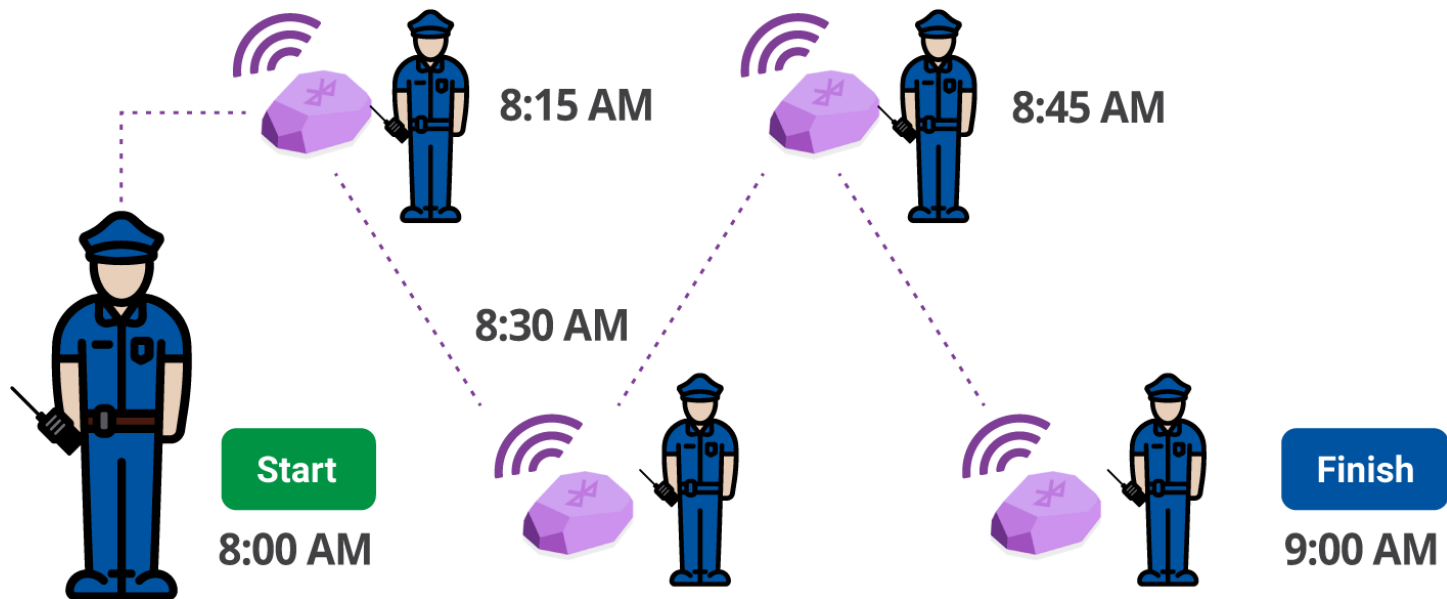




# Guard Tour

Based on Indoor Positioning, this feature allows creating scheduled patrol tours and assigning guards to these routes. It ensures that the personnel attends all checkpoints in the specified order and within the predefined time intervals.

- Bluetooth Indoor Positioning (e.g. iBeacons)
- Can be combined with real-time tracking and location on emergency (i.e. ManDown)





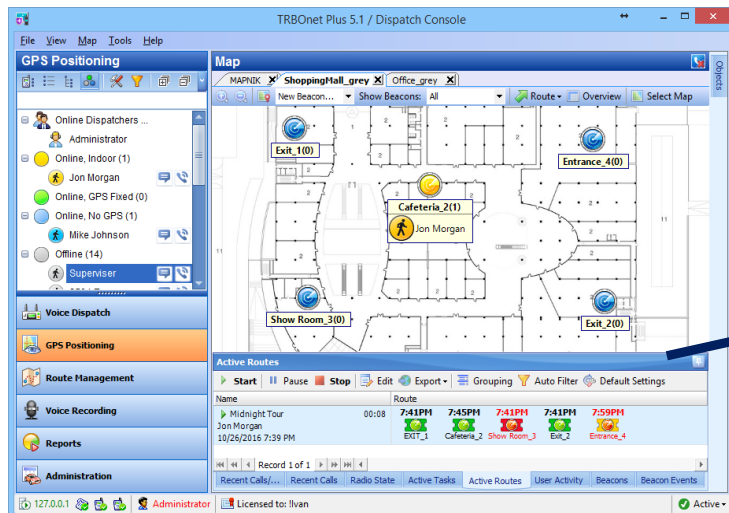
# Guard Tour

## Guard Tour Modes:

- Strict schedule (each checkpoint must be attendant within a specific time range)
- Loose schedule (time ranges for checkpoints are not specified)

## Monitoring Checkpoint Statuses Set Automatically

- When the guard tour starts, the Active Routes pane displays all checkpoints with the Waiting status (grey). Then all attended checkpoints automatically change their statuses to Attended (green) or, if a checkpoint is attended with emergency, to Alarm (red).



Active Routes					
▶ Start      Pause   ■ Stop   Edit   Export ▼   Grouping   Auto Filter   Default Settings					
Name	Route				
▶ Midnight Tour	01:48	7:41PM	7:45PM	7:41PM	7:41PM
Jon Morgan		EXIT_1	Cafeteria_2	Show Room_3	Exit_2
10/26/2016 7:39 PM					Entrance_4

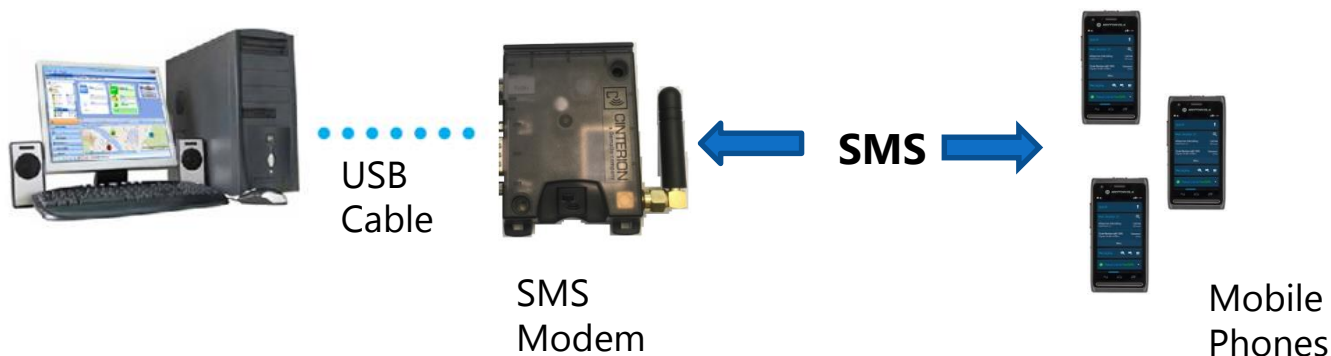
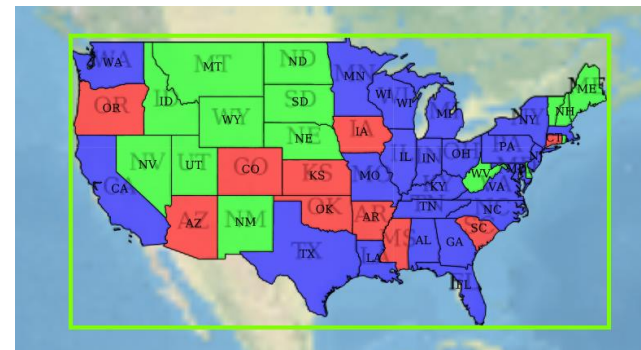
# Multiple Audio Devices

Selected / Unselected channels as well as particular Talk Groups can be assigned to specific audio devices



# Other Features

- Custom Icons for Subscribers
- Phone Interconnect Update
  - Remote Monitor for an Individual Radio
  - Remote Monitor for a Talk Group
- Support for Web Map Tile Service (layers)
- Support for GSM AT Modem / SMS (e.g., Gemalto BGS2T-232)



# SWIFT Gateway A200: New Generation



**Available Now**

- Replacement for A002 gateway
- New form factor
- Wireless and **Wireline** (USB-cable) connection to a donor radio
- Display (state, IP address etc.)

# New Mic Connector

- Provides high quality audio-in
- Allows to use standard Motorola desk mic and hand mic
- Sound card inside
- Voice goes to PC via USB cable. No static noise



# Mobile Client for iOS

TRBOnet Mobile is an application for iOS devices that extends MOTOTRBO to tablets and smartphones. It works like a normal radio and delivers the most important information to the user device.



**Available Now**





**TRBO**net  
*Digital Technologies*



**Thank You**



[www.TRBOnet.com](http://www.TRBOnet.com)