

# To configure a Virtual SIP Server

To configure a Virtual SIP Server in your local network do the following:

## Install VMware Player

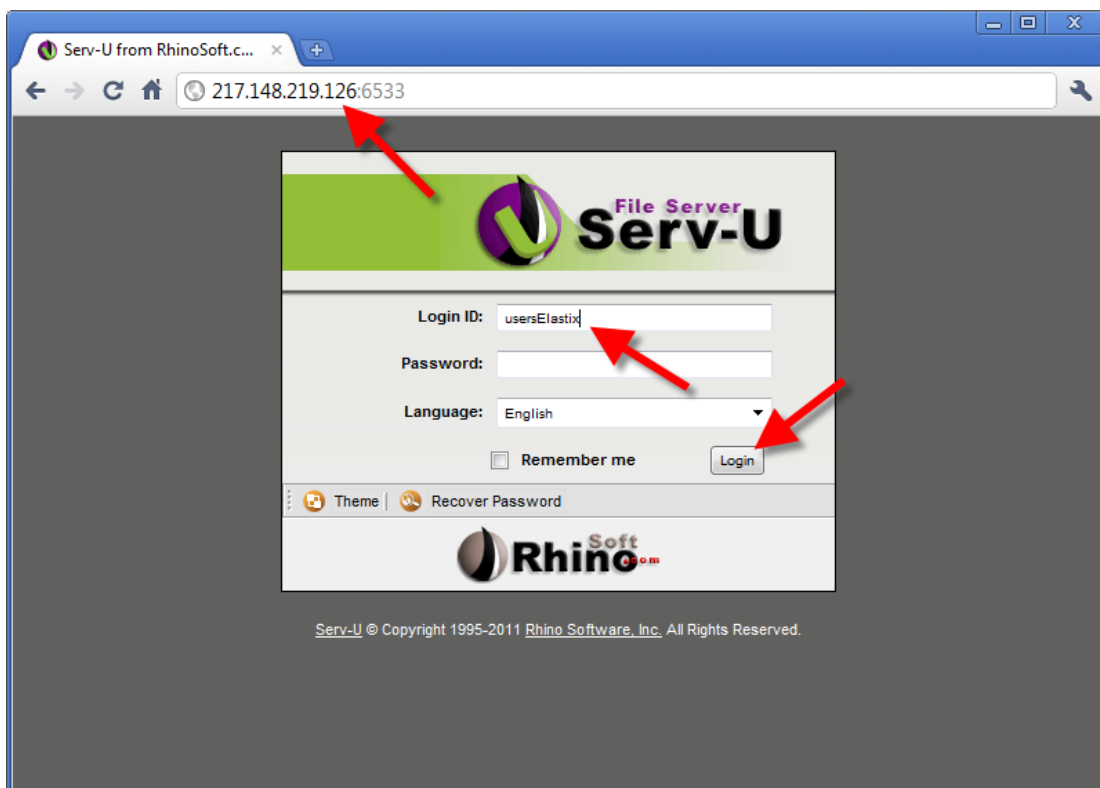
1. Download the **VMware Player 3.1** from: [http://downloads.vmware.com/d/info/desktop\\_downloads/vmware\\_player/3\\_0](http://downloads.vmware.com/d/info/desktop_downloads/vmware_player/3_0)

**NOTE: VMware Player** is a Freeware, but registration is required for downloading the Player

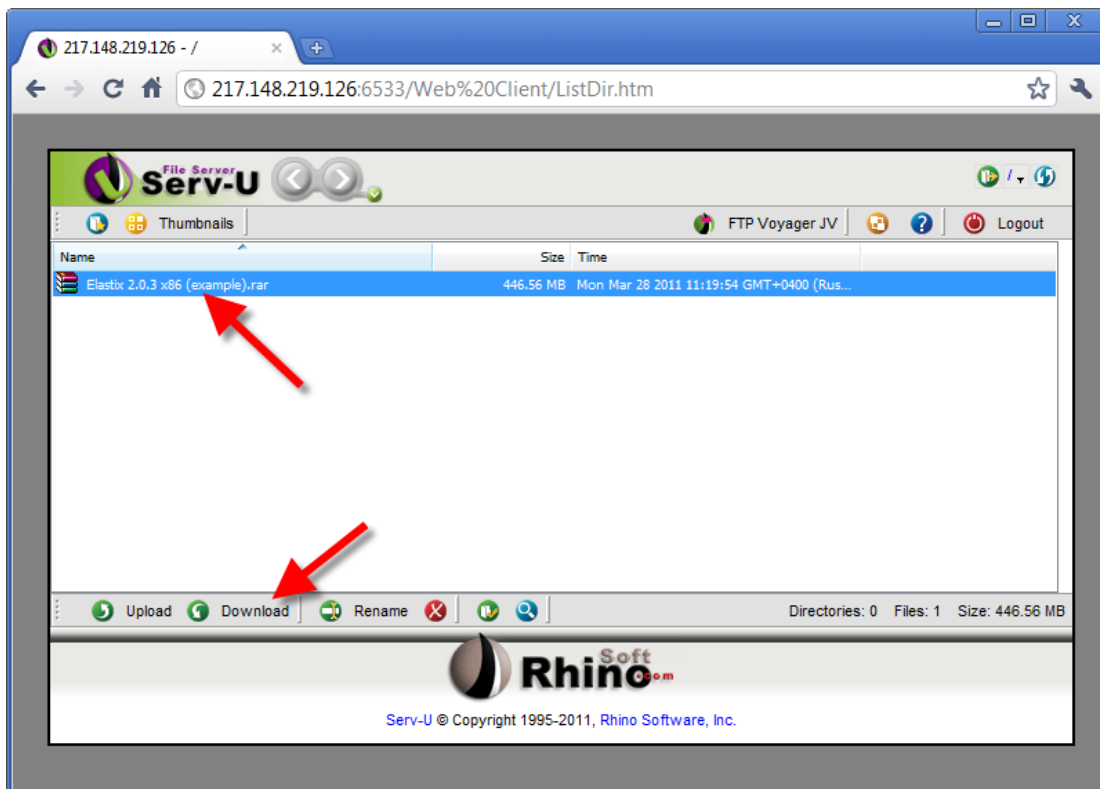
2. Run the installation file and follow the prompts to install the **VMware Player**.

## Download the Elastix Virtual Machine

1. Open **217.148.219.126:6533** in your web browser and type **usersElastix** in the **Login ID** field. Click **Login**.



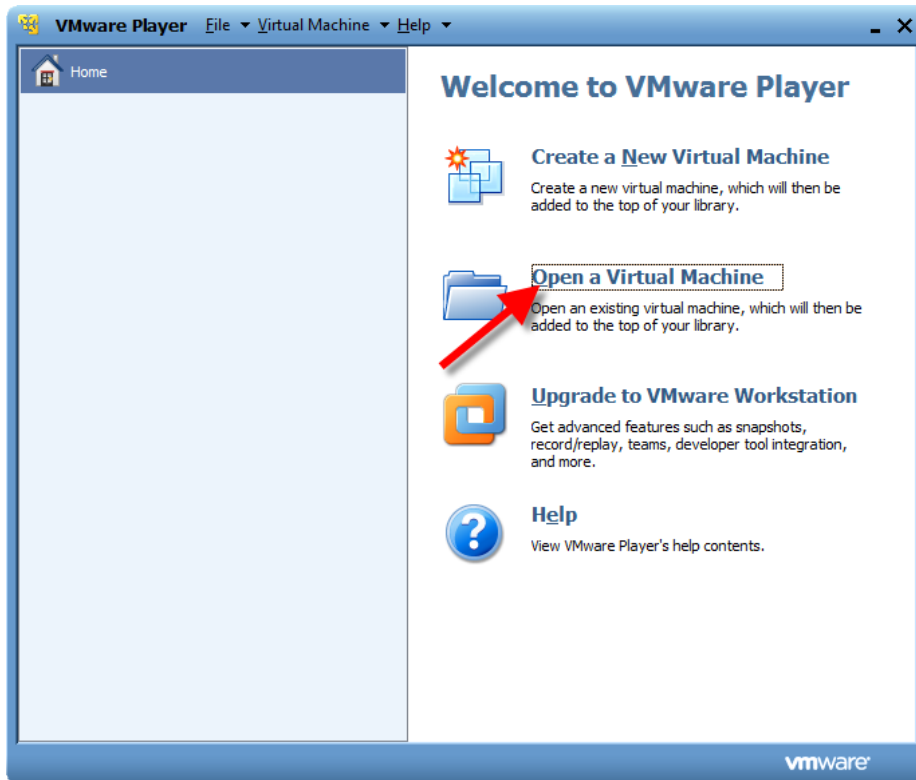
2. Select the **Elastix 2.0.3 x86 (example).rar** archive and click **Download**.



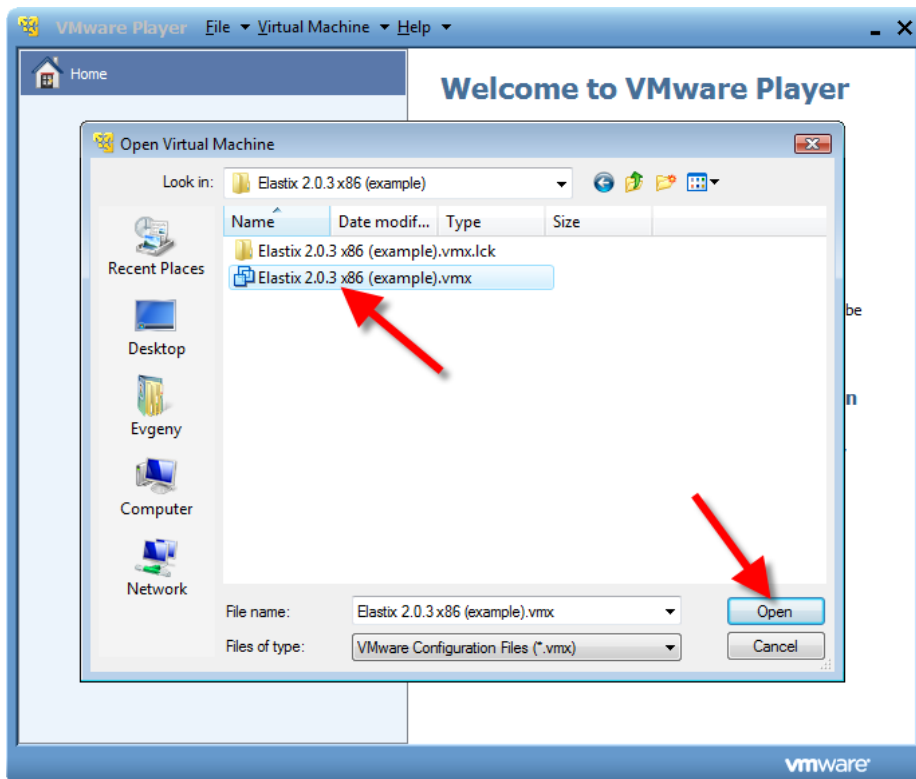
3. Extract the archive to a folder.

## Install the Elastix Virtual Machine

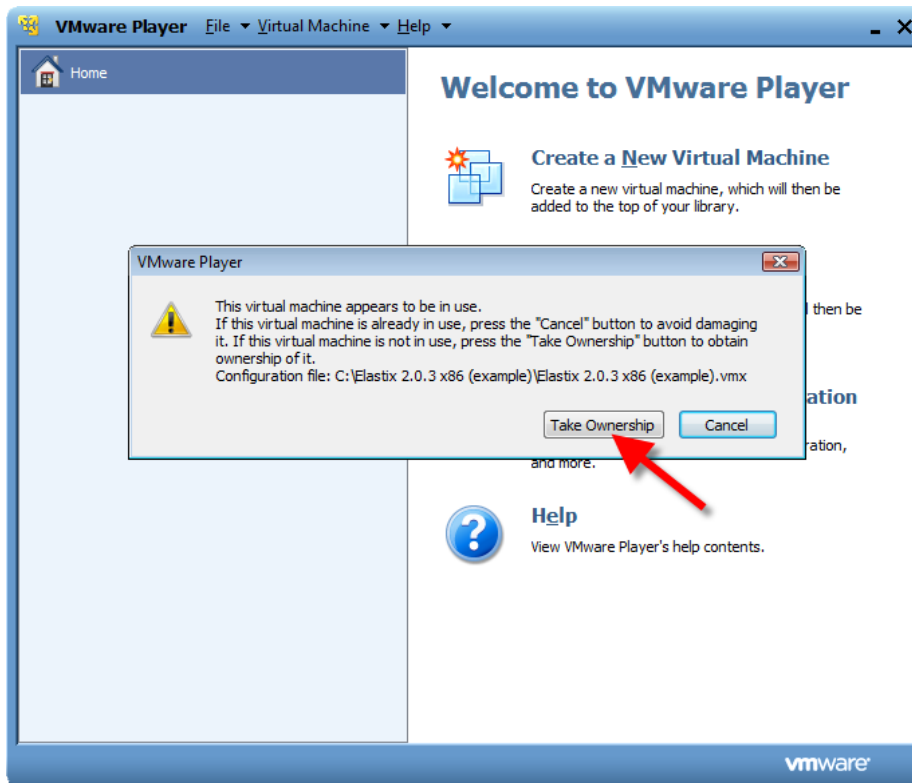
1. Open the **VMware Player** and click **Open a Virtual Machine**.



2. In the displayed window browse for the folder you extracted the Virtual machine archive to, then select the **Elastix 2.0.3 x86 (example).vmx** file and click **Open**.

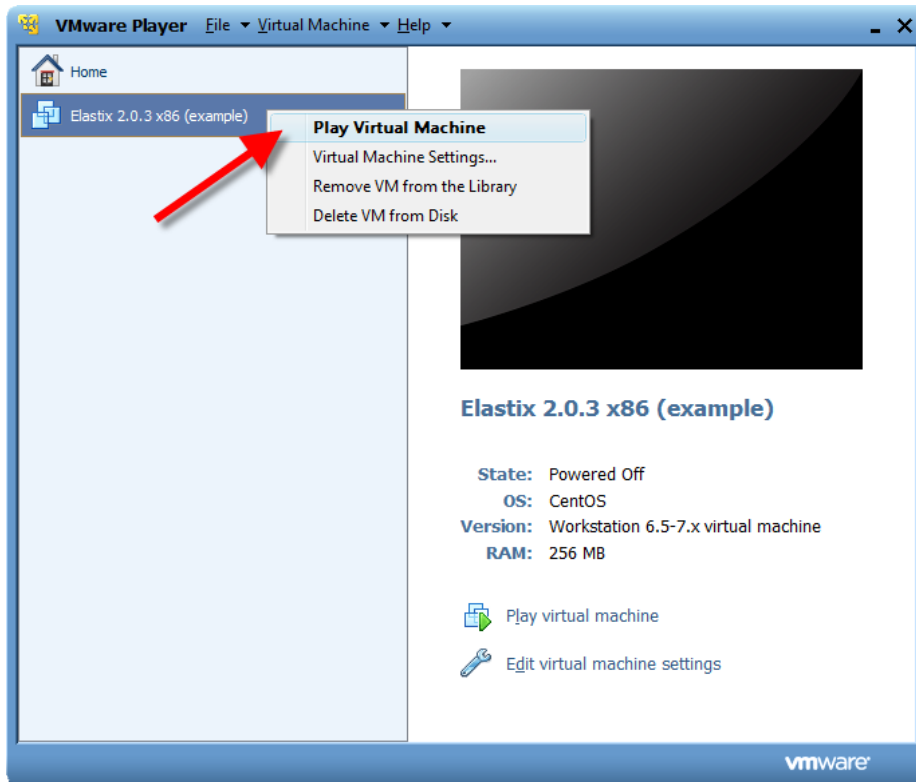


3. In case a warning is displayed click **Take Ownership**.

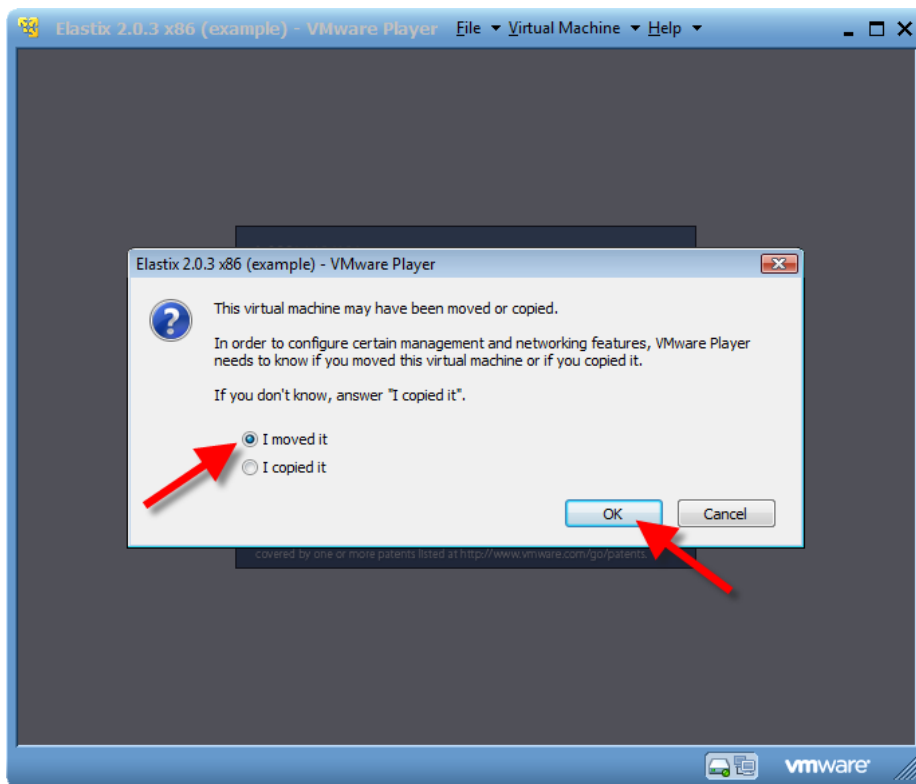


## Start the Elastix Virtual Machine

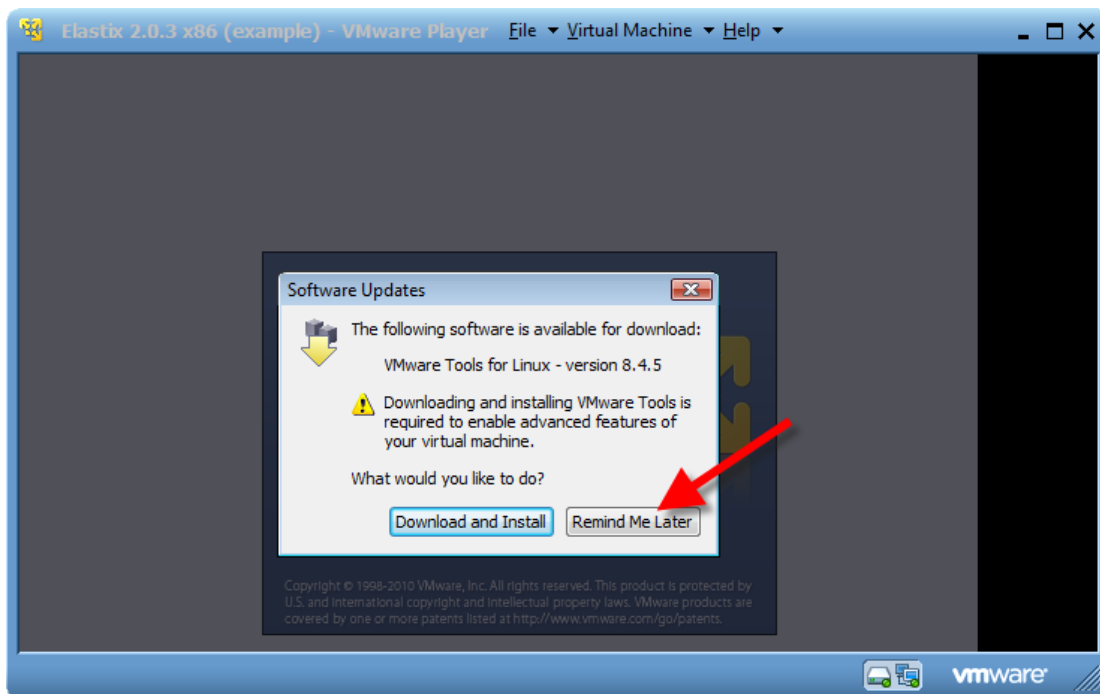
1. Right-click the Elastix Virtual Machine on the list and select **Play Virtual Machine**.



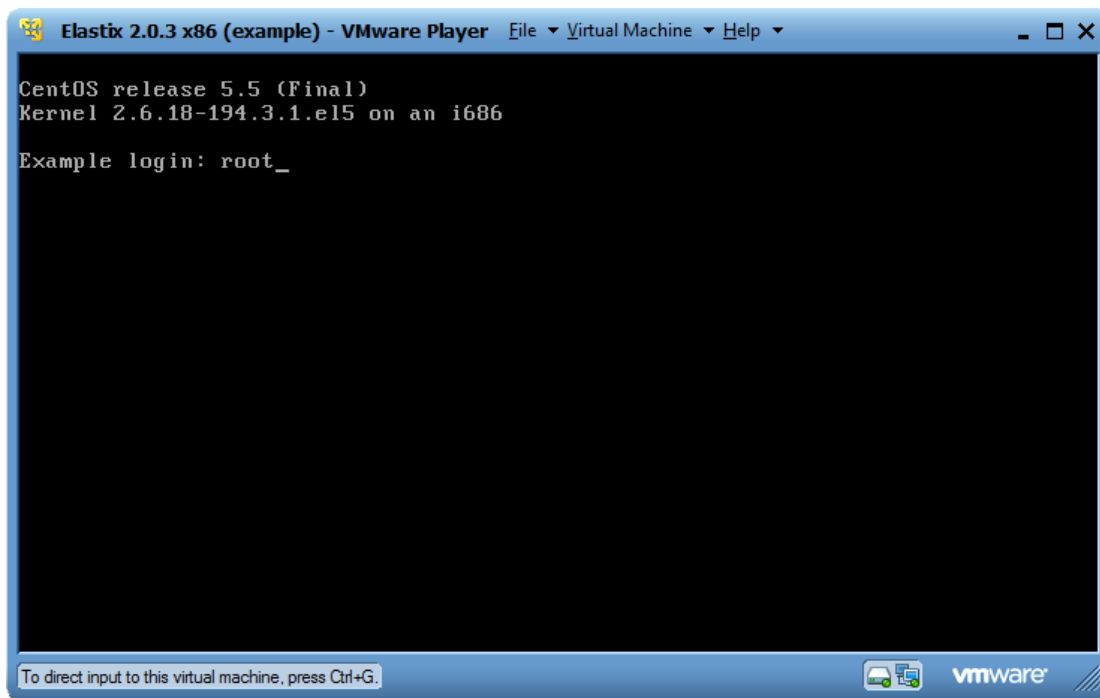
2. In the displayed window select **I moved it** and click **OK**.



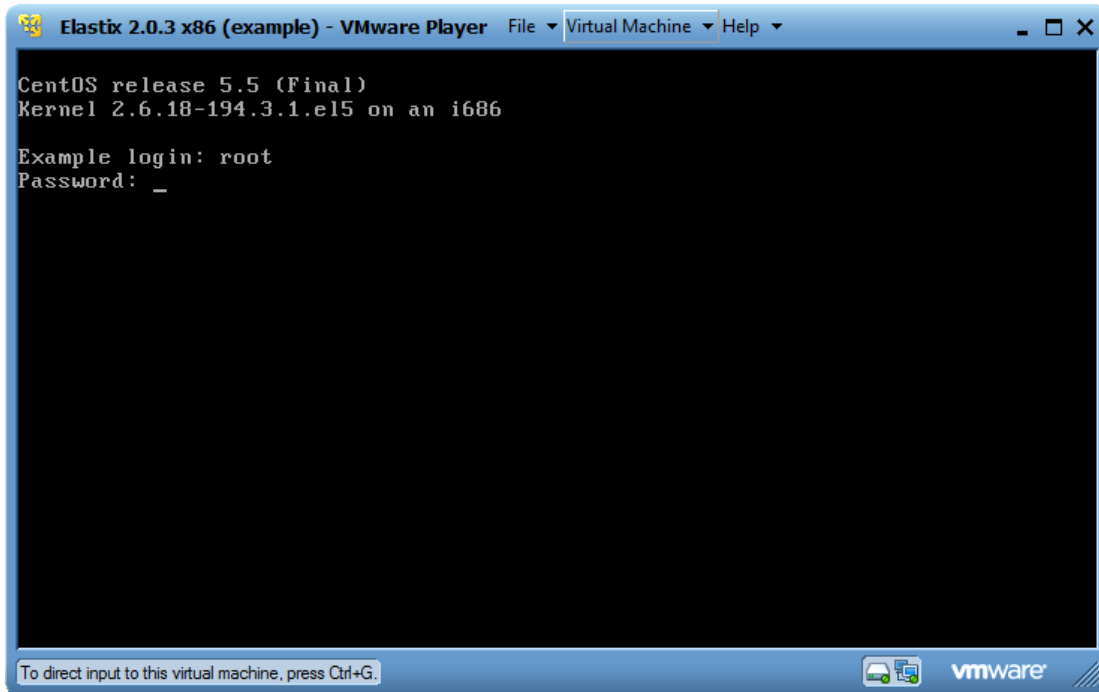
3. In the displayed window select **Remind Me Later**.



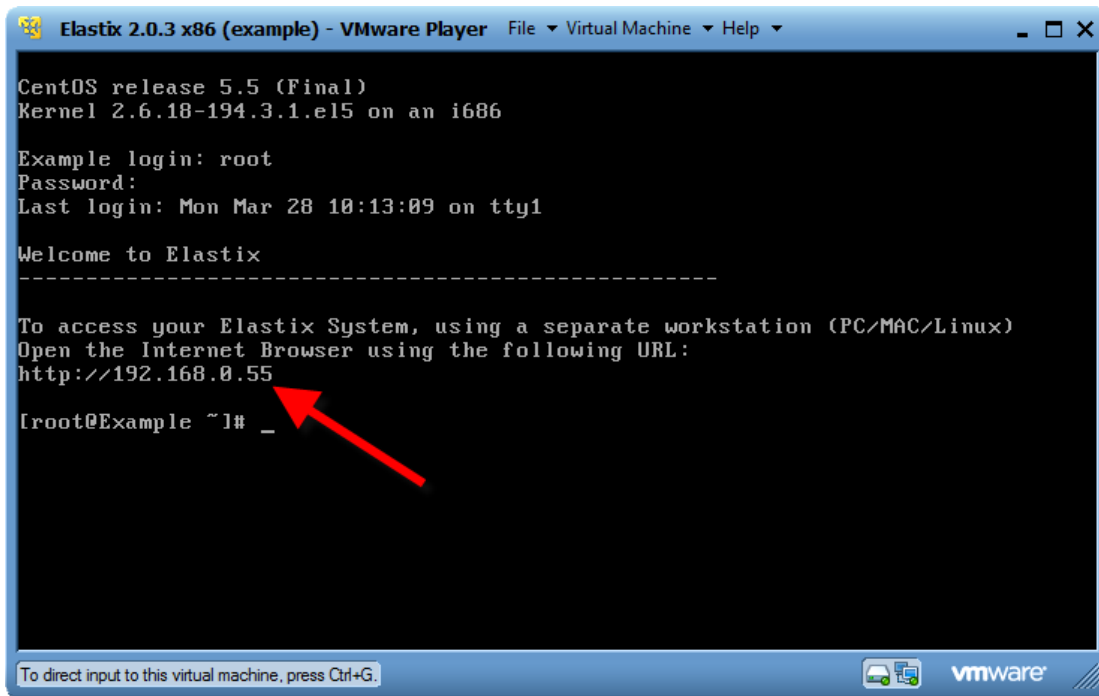
4. Type **root** and press **Enter**.



5. Type **123456** and press **Enter**.



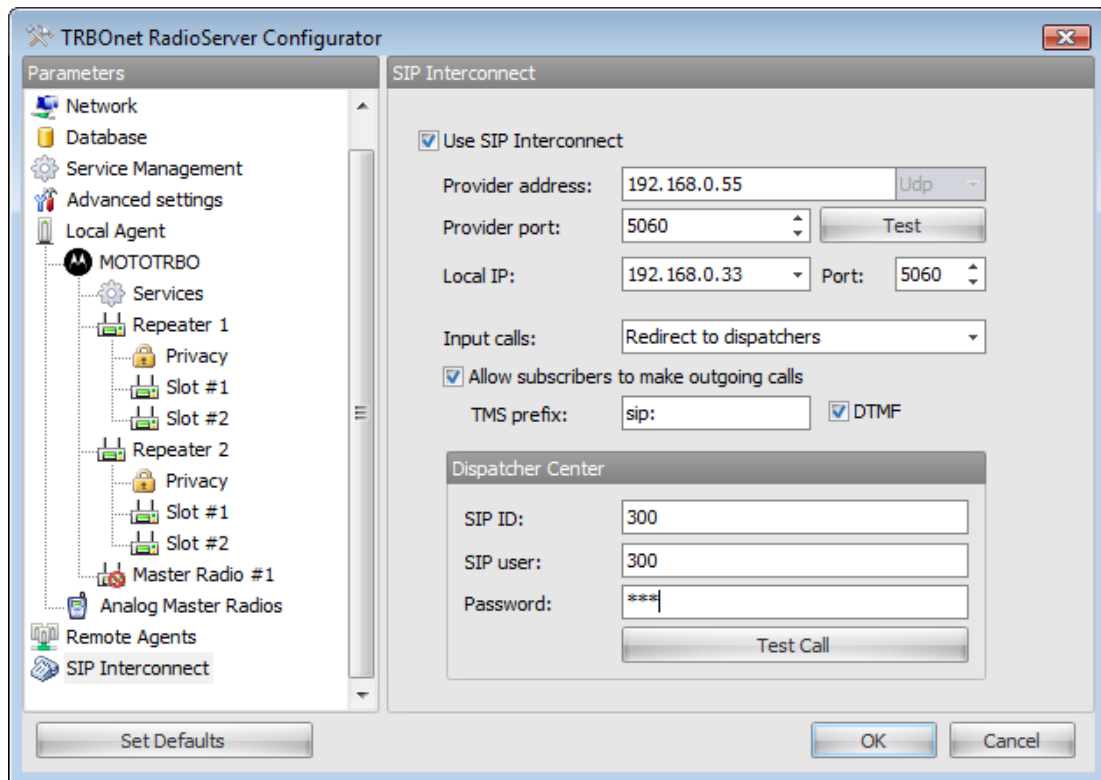
6. When the Virtual Machine starts your Virtual Sip Server IP address is displayed.



7. To switch to your PC and minimize the Virtual Machine window, press **Alt+Ctrl**.

## Configure Virtual SIP Server in TRBOnet RadioServer

1. Open the **TRBOnet RadioServer Configurator** using one of the following options:
  - Use the **TRBOnet Enterprise RadioServer v2.8** shortcut on your desktop
  - In the Start menu, select **All Programs | Neocom Software | TRBOnet Enterprise v2.8 | Configure TRBOnet Enterprise RadioServer v2.8**
2. Select **Sip Interconnect** in the navigation tree.



3. Configure the following parameters:

Parameter	Description
Use Sip Interconnect	Select to enable SIP Interconnect
Provider address	specify your Virtual SIP Server <a href="#">IP address</a> in local network
Provider port	5060
Local IP	specify IP address of the adapter to access your local network
Port	5060
Input calls	Select the RadioServer's actions in case of incoming phone calls: <b>Decline calls, Open voice menu or Redirect to dispatchers</b>
Allow subscribers to make outgoing calls	select to allow subscribers making calls to telephones
TMS prefix	The prefix a radio subscriber will need to use to make a call (for example, if the prefix is " <b>sip:</b> ", the subscriber will need to send a text message to a master radio with the text " <b>sip:N</b> ", where <b>N</b> is the phone number to make call to)
DTMF	Select to enable DTMF
SIP ID	Specify ID in the range 300 to 305
SIP user	The same as SIP ID
Password	The same as SIP ID

## Configure a telephone number on Virtual Server

To configure telephone subscribers (hardware IP-phones or softphones) on the Virtual SIP Server, specify the following parameters:

**SIP Server IP Address** - the [IP address](#) specified in your Virtual Machine

**SIP ID** - a number from the range 300 to 305

**SIP User** - the same as SIP ID

**Password** - the same as SIP ID

**NOTE:** The current settings allow making calls between the phone subscriber registered on the Virtual SIP Server.